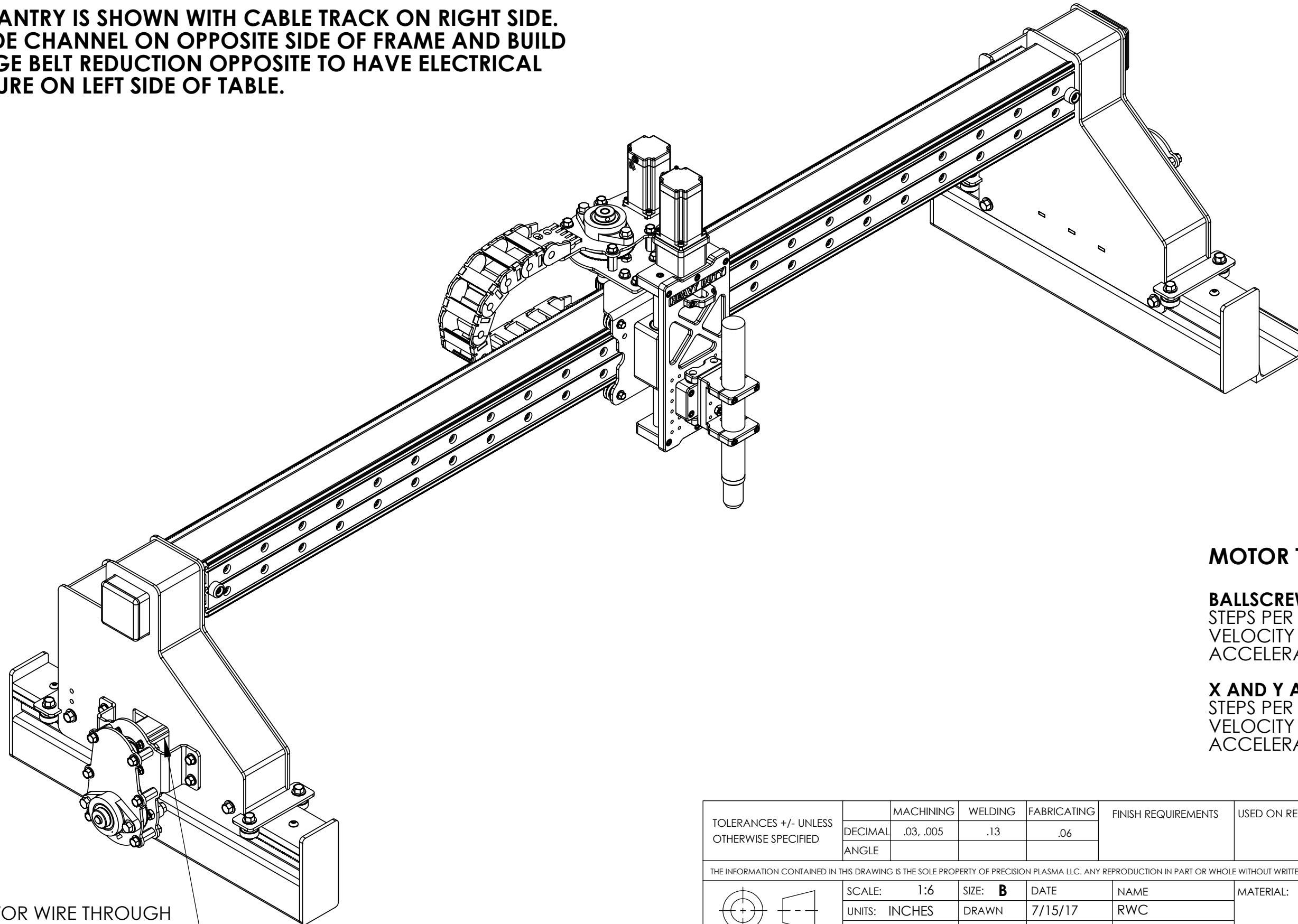


NOTE: GANTRY IS SHOWN WITH CABLE TRACK ON RIGHT SIDE. WELD SIDE CHANNEL ON OPPOSITE SIDE OF FRAME AND BUILD CARRIAGE BELT REDUCTION OPPOSITE TO HAVE ELECTRICAL ENCLOSURE ON LEFT SIDE OF TABLE.



RUN FAR MOTOR WIRE THROUGH 1X3 CABLE TRACK SUPPORT TUBE TO OTHER SIDE MOTOR

MOTOR TUNING:

BALLSCREW Z AXIS
 STEPS PER INCH 10160
 VELOCITY 120
 ACCELERATION 35

X AND Y AXIS:
 STEPS PER INCH 2228.17
 VELOCITY 500
 ACCELERATION 35

TOLERANCES +/- UNLESS OTHERWISE SPECIFIED		MACHINING	WELDING	FABRICATING	FINISH REQUIREMENTS	USED ON REFERENCE MACHINE/DRAWING:
	DECIMAL	.03, .005	.13	.06		
	ANGLE					
THE INFORMATION CONTAINED IN THIS DRAWING IS THE SOLE PROPERTY OF PRECISION PLASMA LLC. ANY REPRODUCTION IN PART OR WHOLE WITHOUT WRITTEN PERMISSION IS PROHIBITED.						
	SCALE:	1:6	SIZE: B	DATE	NAME	MATERIAL:
	UNITS:	INCHES	DRAWN	7/15/17	RWC	
	SOLIDS (Y/N):	Y	CHECKED			
PRECISION PLASMA LLC.	TITLE:	MAGNUM 7 GANTRY KIT			DRAWING NUMBER:	REV.
					MAGNUM 7	SHEET 1 OF 1