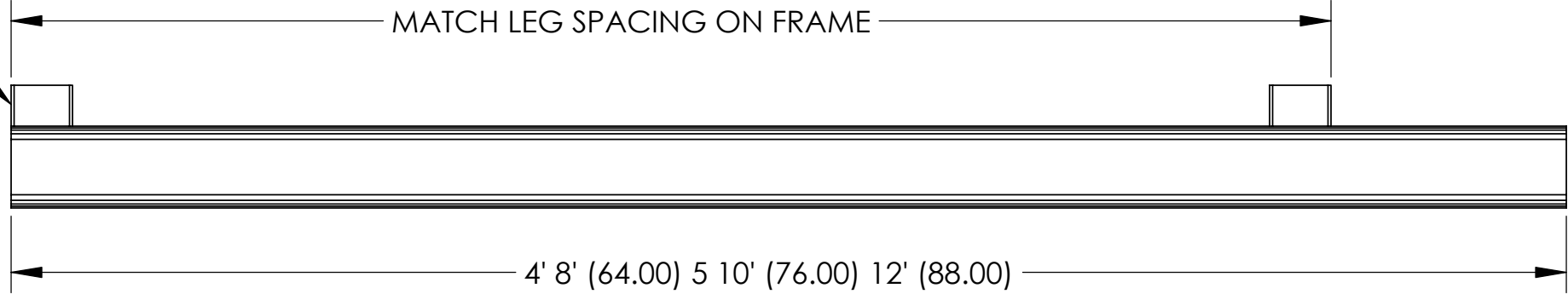


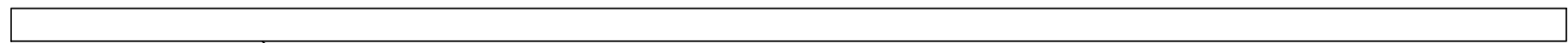
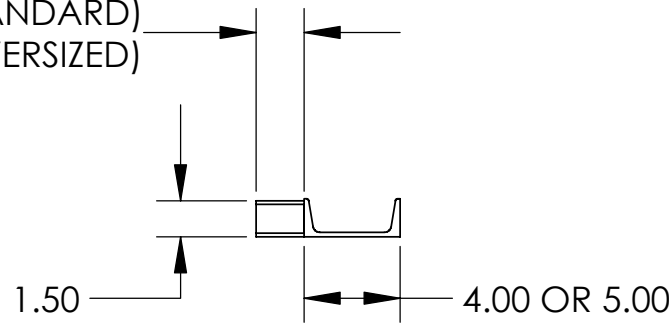
1.5 X 3 X 1.5 OR 2.0 TUBING (2)

MATCH LEG SPACING ON FRAME



4' 8" (64.00) 5' 10" (76.00) 12' (88.00)

2.00 (STANDARD)
1.50 (OVERSIZED)



C4" X 5.4 # CHANNEL (STANDARD)
C5" X 6.7# CHANNEL (OVERSIZED)

**NOTE: RIGHT HAND CHANNEL
BUILD OPPOSITE FOR USE ON LEFT HAND SIDE OF FRAME**

4" CHANNEL AND 2" STANDOFF USED WITH STANDARD CABLE TRACK. OVERSIZED CABLE TRACK OPTION REQUIRES 5" CHANNEL WITH 1.5" STANDOFFS.

TOLERANCES +/- UNLESS OTHERWISE SPECIFIED		MACHINING	WELDING	FABRICATING	FINISH REQUIREMENTS	USED ON REFERENCE MACHINE/DRAWING:
	DECIMAL	.03, .005	.13	.06		
	ANGLE					
THE INFORMATION CONTAINED IN THIS DRAWING IS THE SOLE PROPERTY OF PRECISION PLASMA LLC. ANY REPRODUCTION IN PART OR WHOLE WITHOUT WRITTEN PERMISSION IS PROHIBITED.						
	SCALE:	1:8	SIZE: B	DATE	NAME	MATERIAL:
	UNITS:	INCHES	DRAWN	2/22/15	RWC	
	SOLIDS (Y/N):	Y	CHECKED			
PRECISION PLASMA LLC.	TITLE:	SD-35 CHANNEL ASSY CABLE TRACK SUPPORT			DRAWING NUMBER:	REV.
					SD-35 CHANNEL	SHEET 1 OF 1